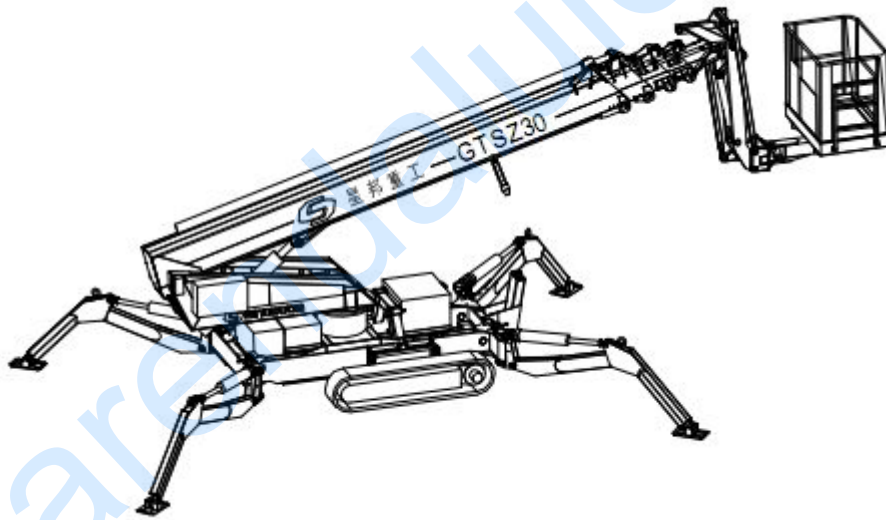




GTSZ30



2012 .

# 1.

30

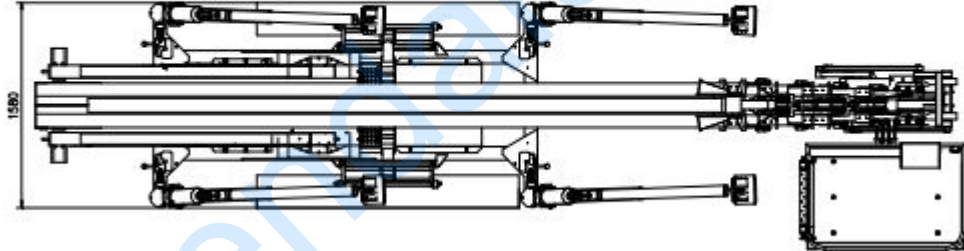
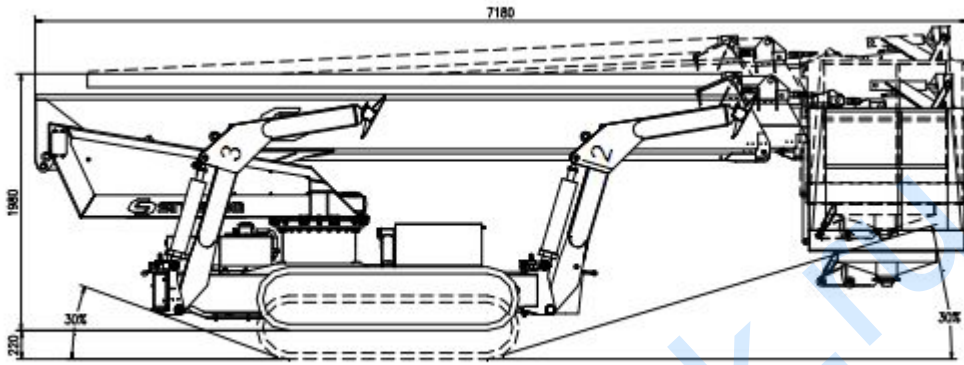
~GTSZ30~

	28m
	30m
	14m (200kg)
	15.7m (80kg)
	450°
	180°
	180°
	30%
	200Kg
	0 ~ 3km/h
	12.5m/s
	1°
( 7 )	77 ( )
	400N
( )	7.2m
( )	1.58m
( )	1.98m
	0.31m
( * * )	1.2x0.8x1.1m
	5000Kg
	0.31x0.22m
	32KN
	2 KN/m <sup>2</sup>
	65KN/m <sup>2</sup>
/	5.5/4.8
/	4.39/3.9
/	3.2/3
,	30%
	1.26m
	±20°
) (	
) (	220
/	0.22/0.17m
	75L
	40L
	12VDC
	100m

		403D, 18.5
	220	3Kw
400V		5Kw

arendalulek.ru

2.



### 3.

30

(GTSZ30):

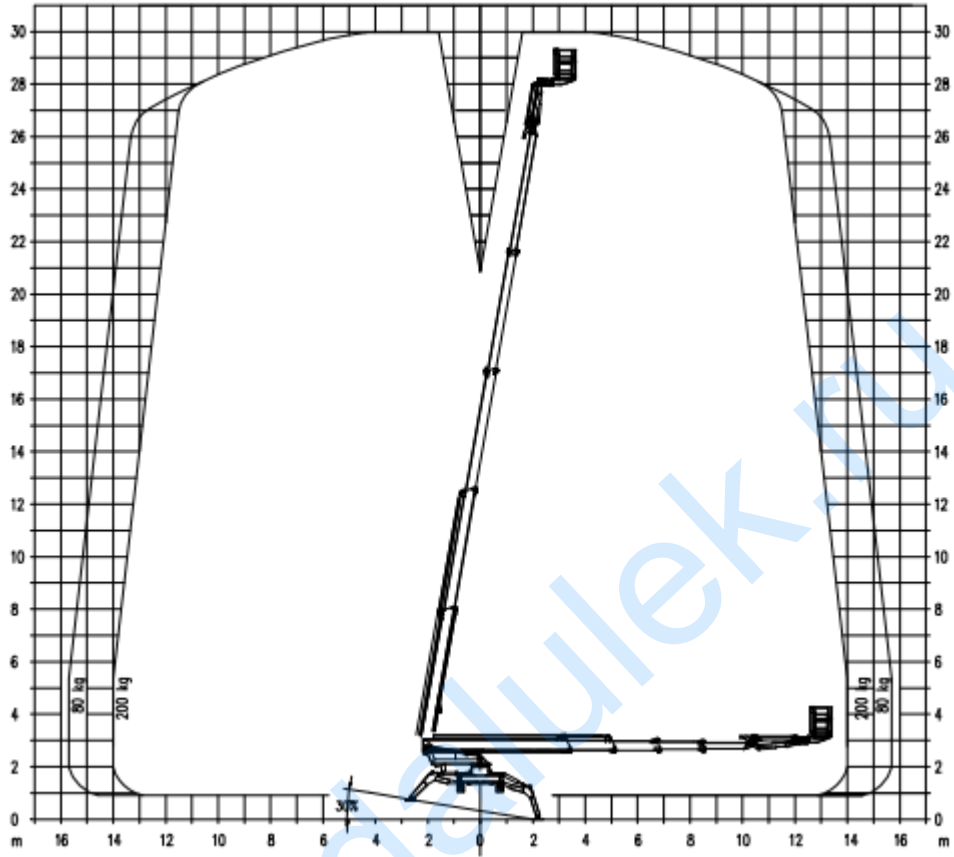
		-
1.		( )
2.		( )
3.		SAUER ( )
4.		( ), ( ), ( )
5.		Rexroth ( )
6.		( ) ( )
7.		EATON ( )
8.		
9.		
10.	220	
11.		
12.		
13.		
14.		KTR ( )
15.	PLC	( )
16.		AKERSTROMS ( )
17.		EMB

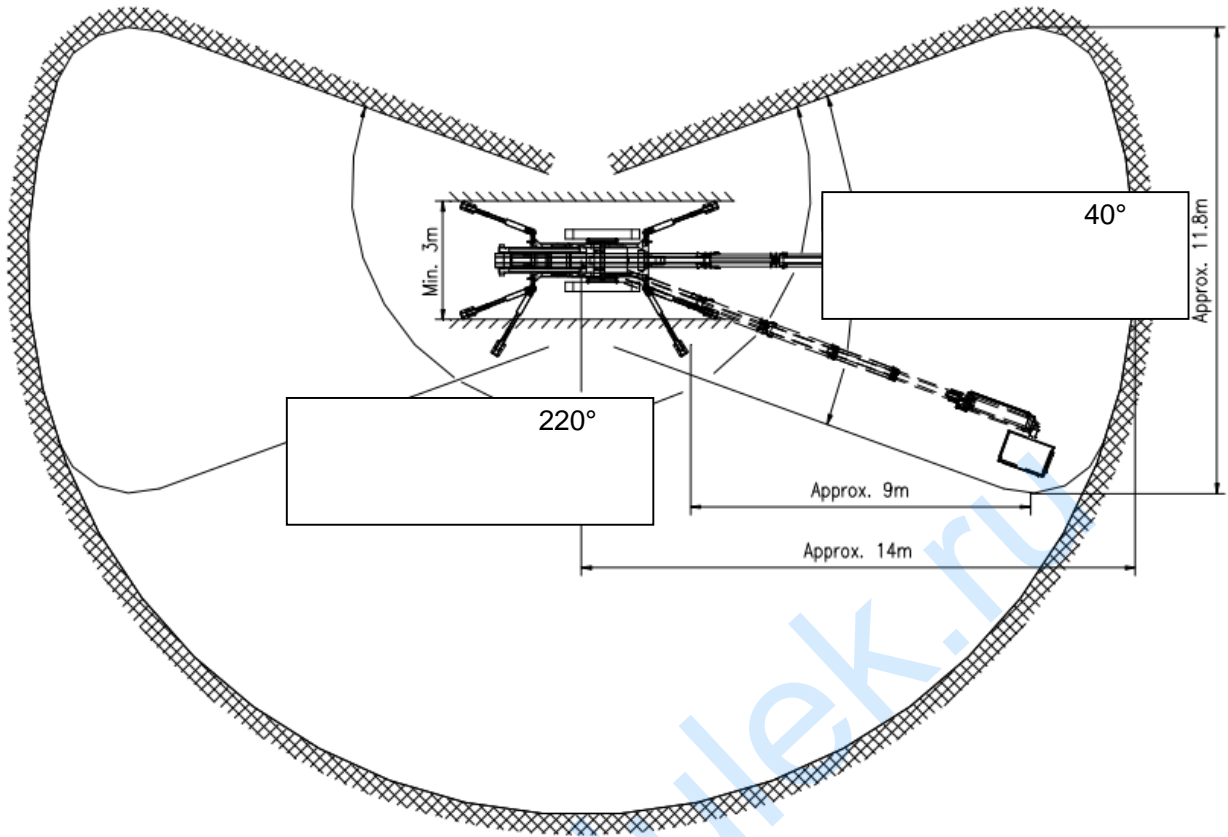
30

(GTSZ30)

		-
1	380	

4.





arendalulek.ru





✓  
✓

✓  
✓ 180  
✓ 200

✓ 100  
✓ /  
✓  
✓  
✓

✓  
✓  
✓ 10 /  
✓

✓  
✓  
✓

---

✓ 1.58 1.98

✓ 1.26

---

✓  
✓  
✓  
✓  
10

arendalulek.ru

## 6.

➤

(1)

(2)

(3)

(4)

(5)

➤

(1)

(2)

(3)

(4)

(5)

➤

(1)

(2)

➤

(1)

(2)

(3)

(4)

(5)

PLC,

200 .

200 ,

GTSZ30—14 ,

80 --15.7 .

2

--30%.

, PLC ,

( .

Sa2.5+

+

«

»

➤

(1)

;

(2)

;

(3)

PLC

,

,

arendalulek.ru